

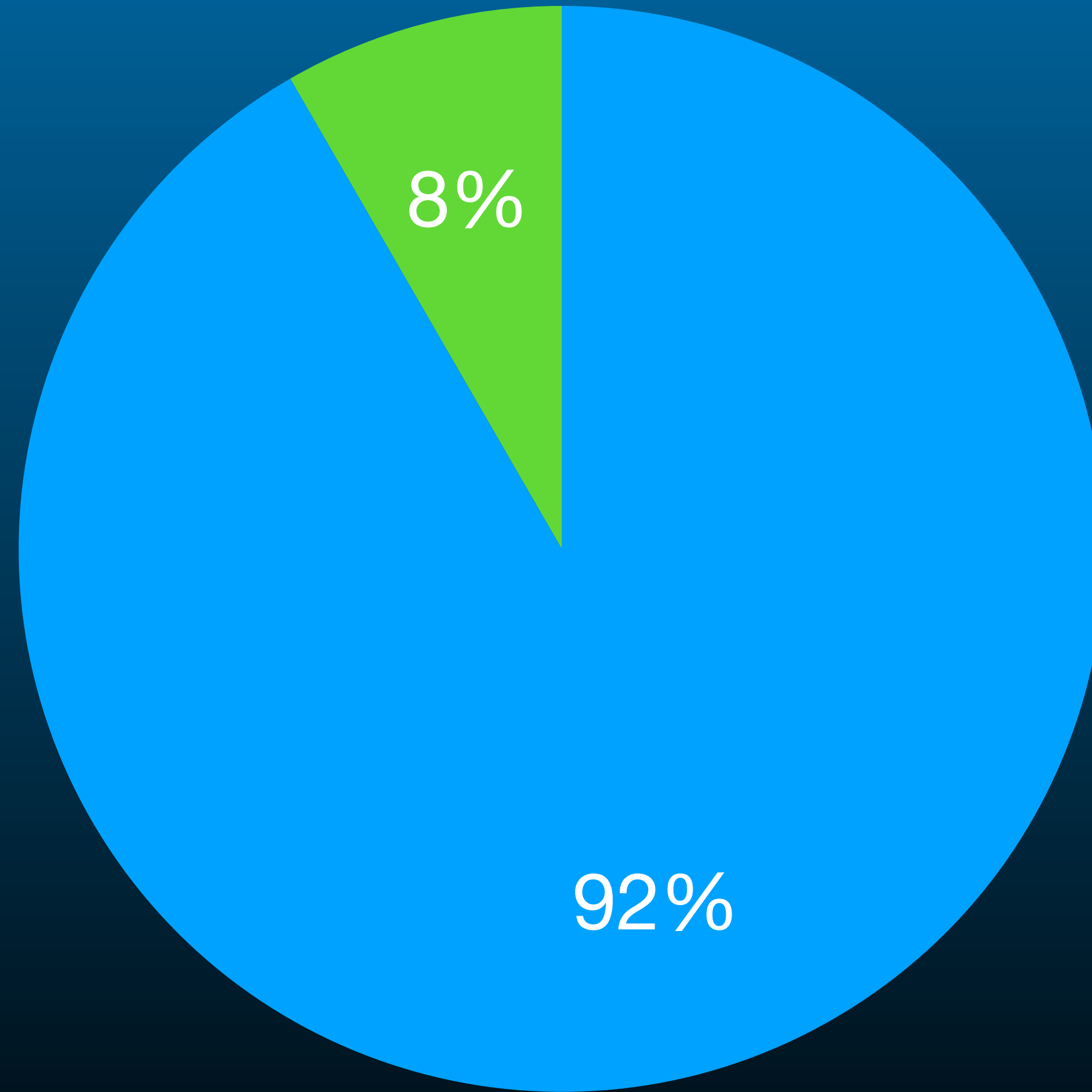
Power your Home from your Car

300MPG.org

Ben Nelson - June 24, 2023

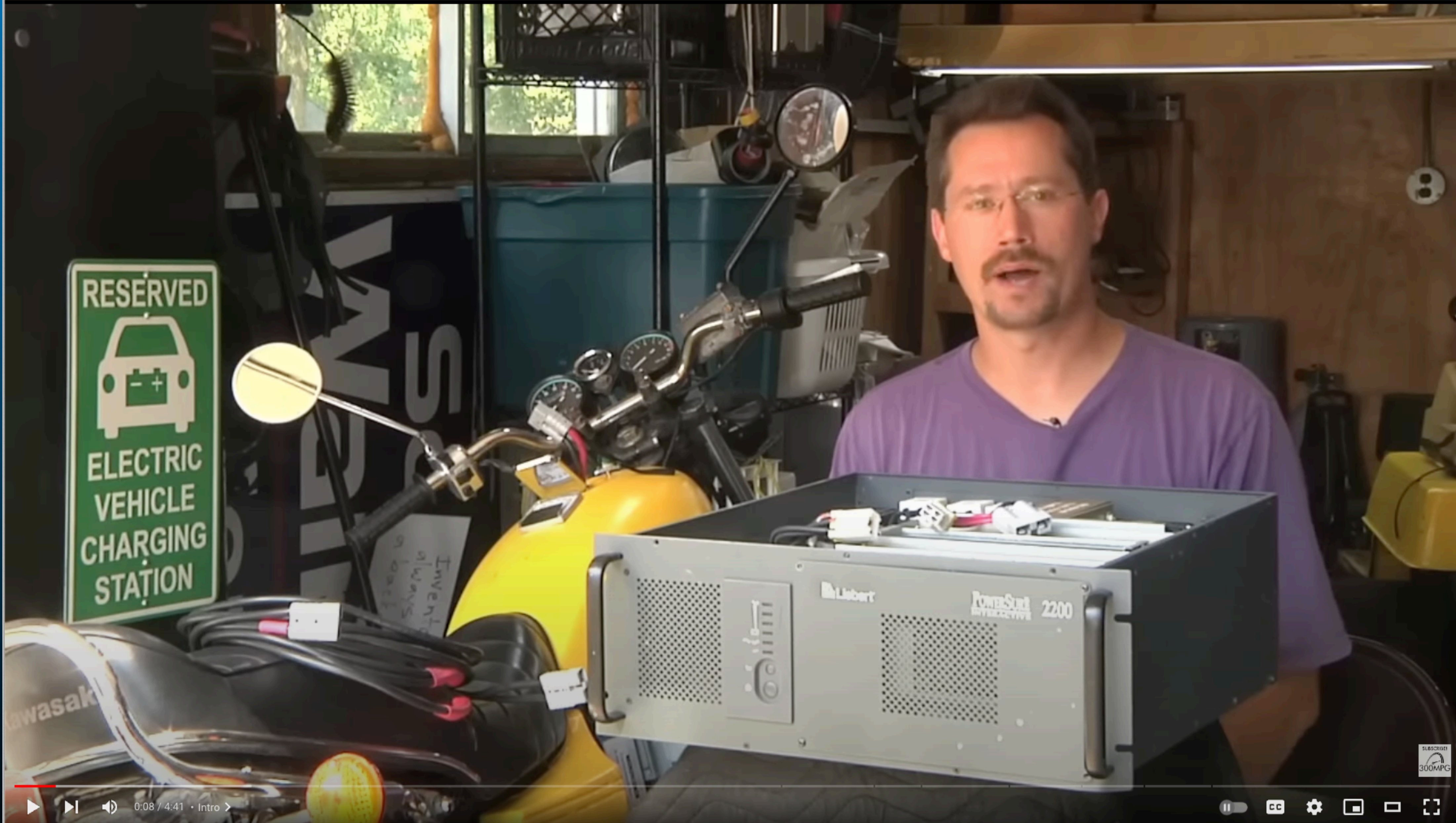


Automotive Use



Driven: 2 Hrs

Parked: 22 Hrs



0:08 / 4:41 · Intro >

Pause, CC, Settings, Full Screen, Maximize icons

Poor-Mans Smart-Grid | 48V power backup from electric motorcycle

BenjaminNelson
111K subscribers

[Analytics](#)

[Edit video](#)

[94](#) Likes

[Comments](#)

[Share](#)

[Download](#)

[Thanks](#)

[Clip](#)

[More](#)

All

Electronic components

Related

For you >

Selfies With Background

More options

Hurricane Maria - Puerto Rico, 2017



How to Get Power Out from Car?

- USB - 5V, 1 or 2A
- Cigarette Lighter Plug - 12V, 10-20A
- Built-In Inverter (Maverick, etc.)
- 12V Starter Battery - 12V, High Current
- EV Charging Port? (J1772)
- DC Fast Charge Port

DC Fast Charge Connections



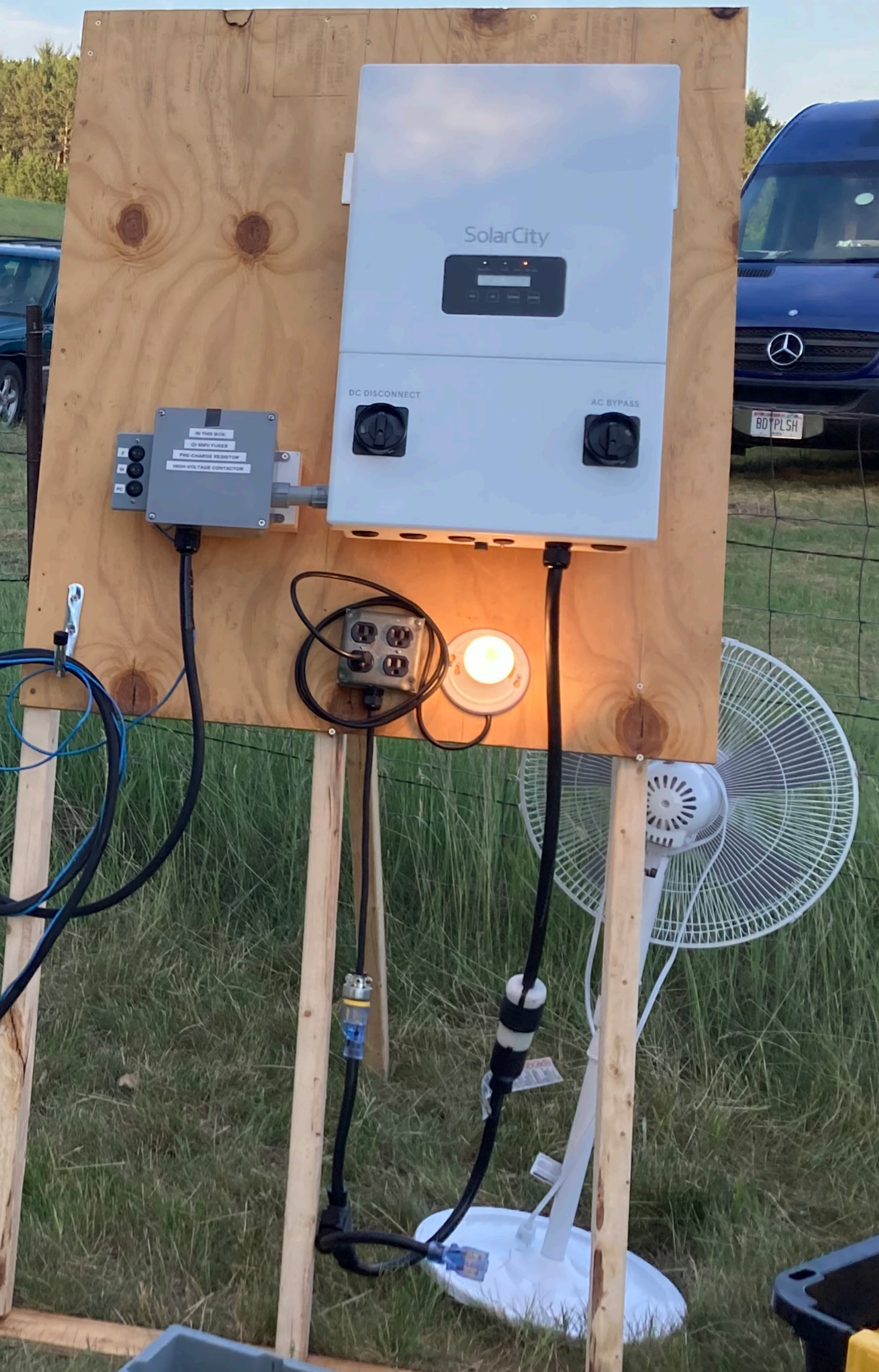
CHAdeMO



CCS

CHAdEMO Inverter







Practical V2X Right Now

- 12V Power Inverter
- Built-In V2L (Kia EV6, Rivian)
- Whole Power Home Backup (Ford Lightning)



DIY V2L



V2L (Vehicle to Load)



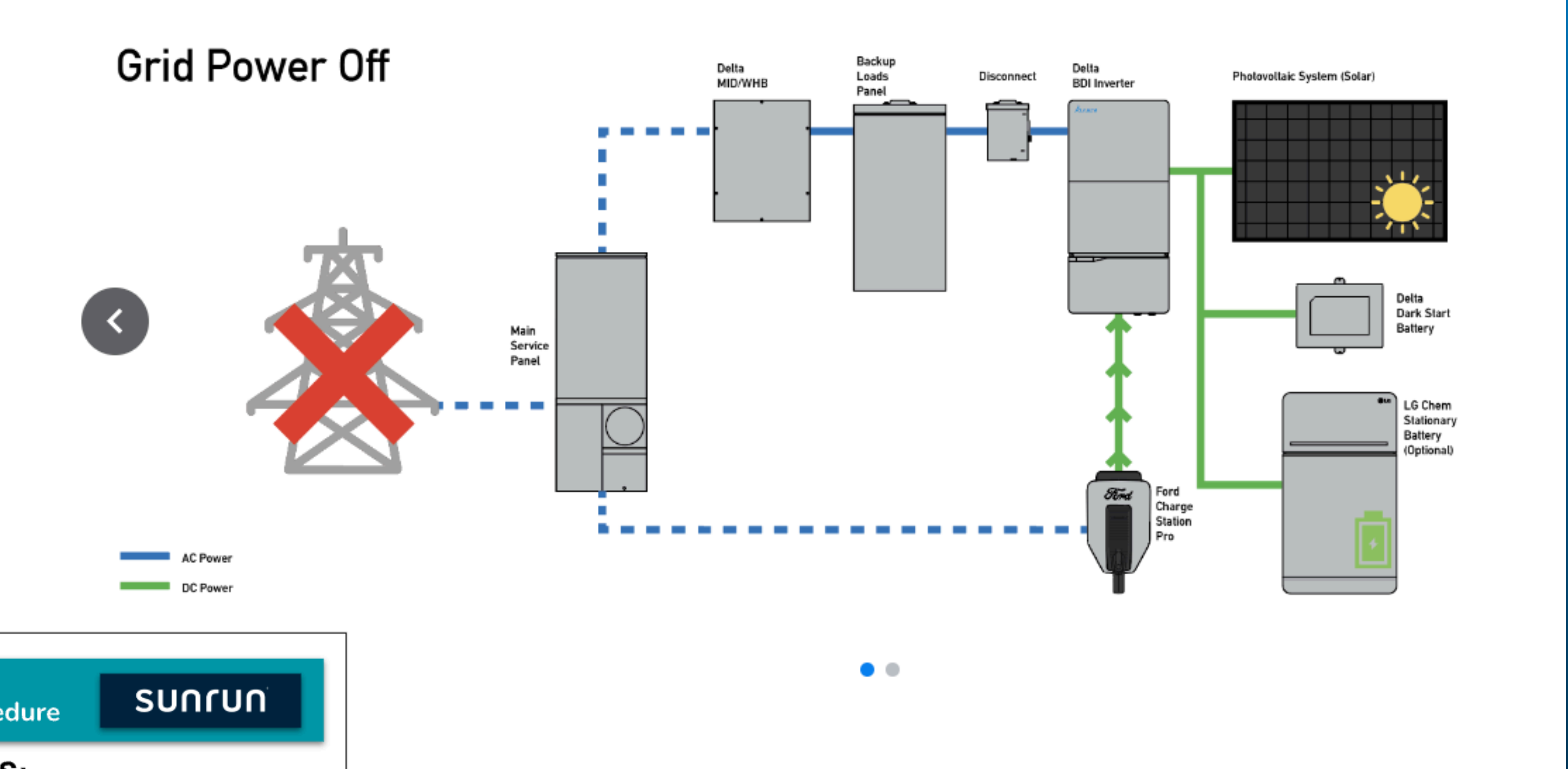
Kia EV6



Ford F150 Hybrid - 240V/30A



Ford F150 Lightning



Document Number:
INS-SOP-0226-01
 Revision: 1

- SUPERSEDES PREVIOUS:**
- Delta BDI Inverter Installation - INS-SOP-0166
 - Delta WHB - INS-SOP-0167
 - Delta Accessory Battery Pack - INS-SOP-0169

Ford Home Integration System Installation and Wiring



Copies of this SOP including PDFs and paper copies are uncontrolled and may be out of date.

Ford F150 Lightning Whole Home Power Backup

DIY Inverter Hook-up

- DC/DC Converter Power (130A)
- Inverter Power (1,000 - 2,000W)
- Cables vs Current
- Fusing/CB
- Connection/Quick Disconnect



WARNING: CLEAN ALLER...
BEFORE REMOVING...
DO NOT FIELD FROM A SEALED CONTAINER.

DANGER: POISON

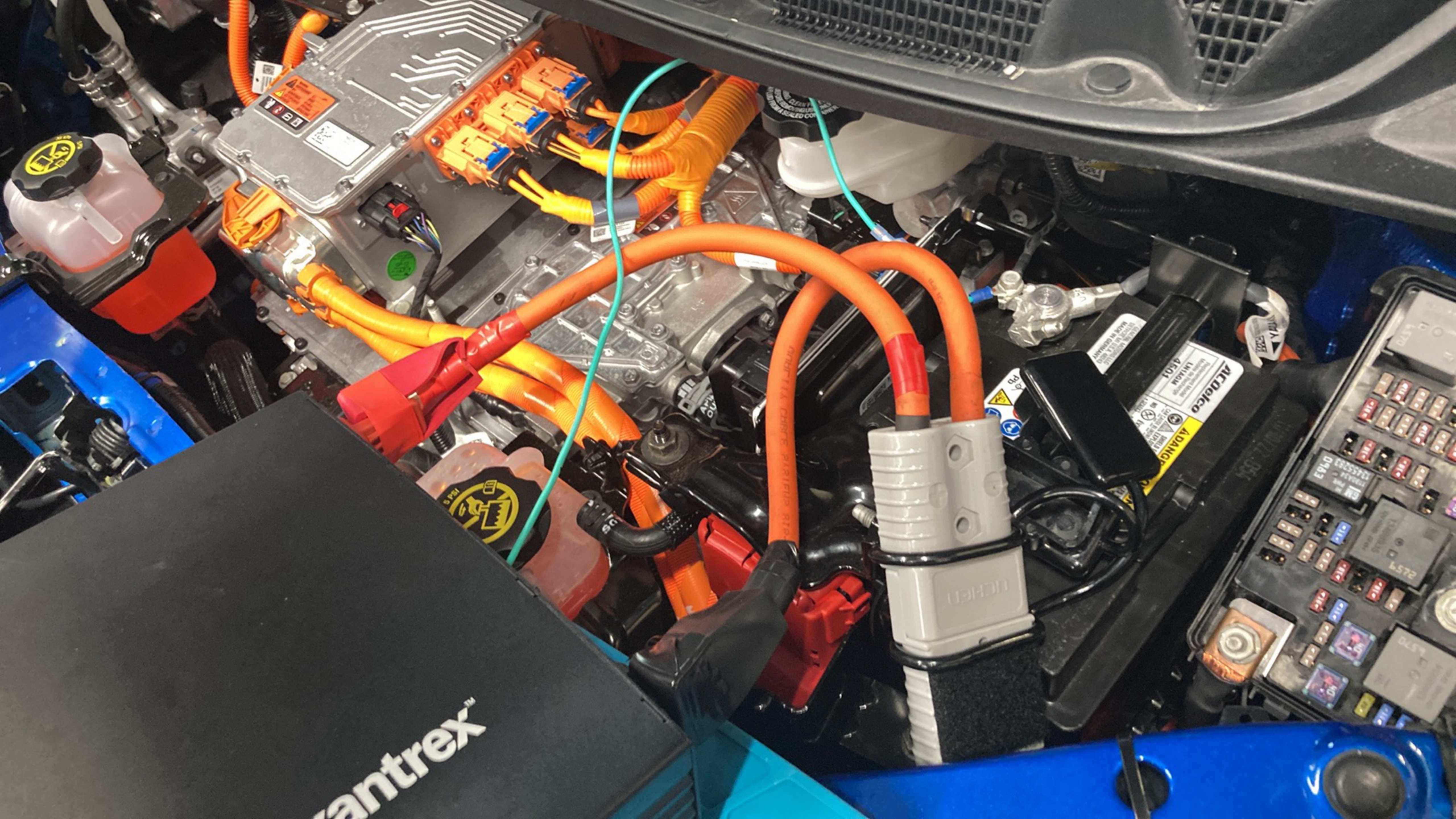
5 PSI
35 kPa

MADE IN KOREA

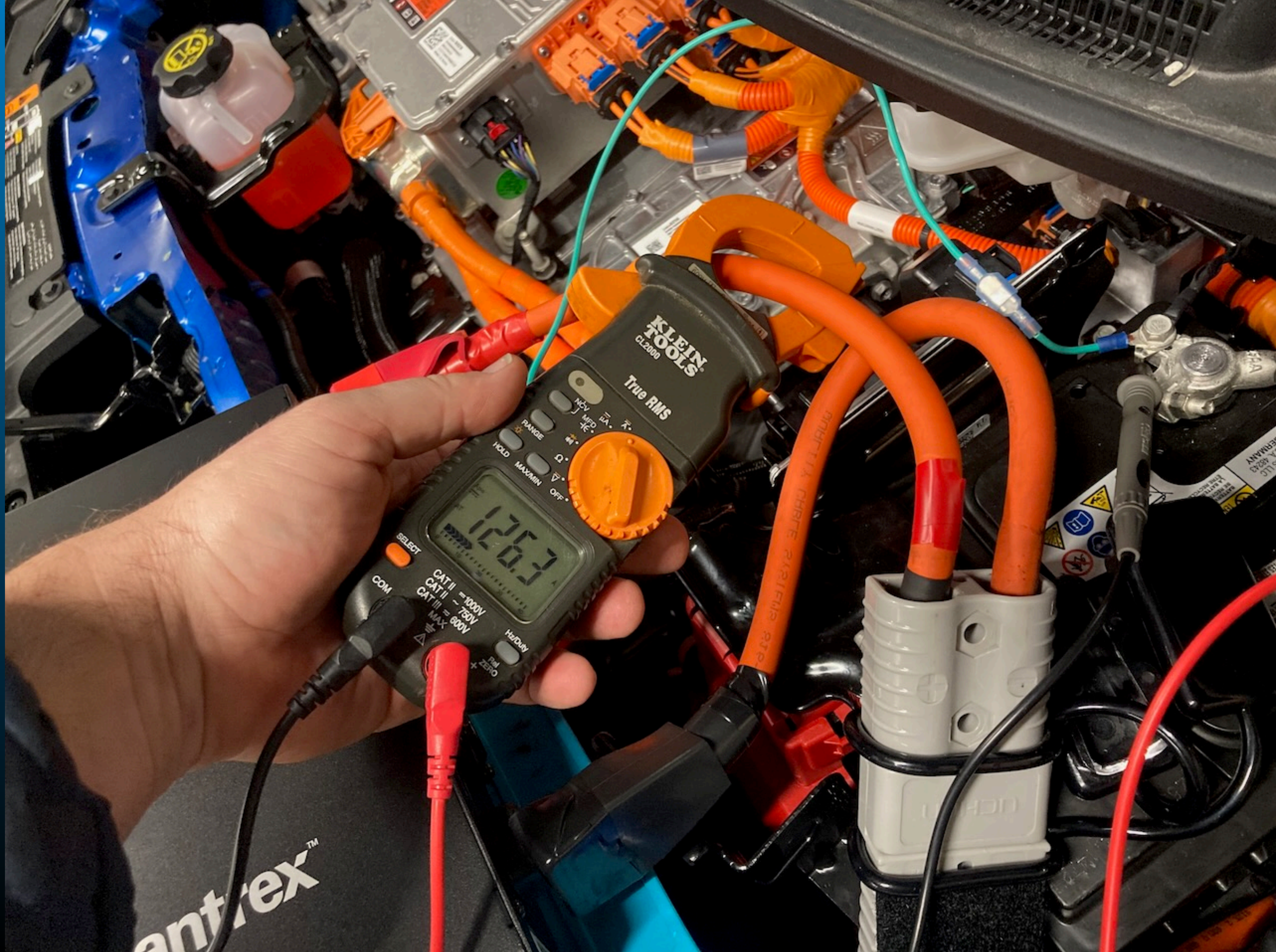
APM
OUT

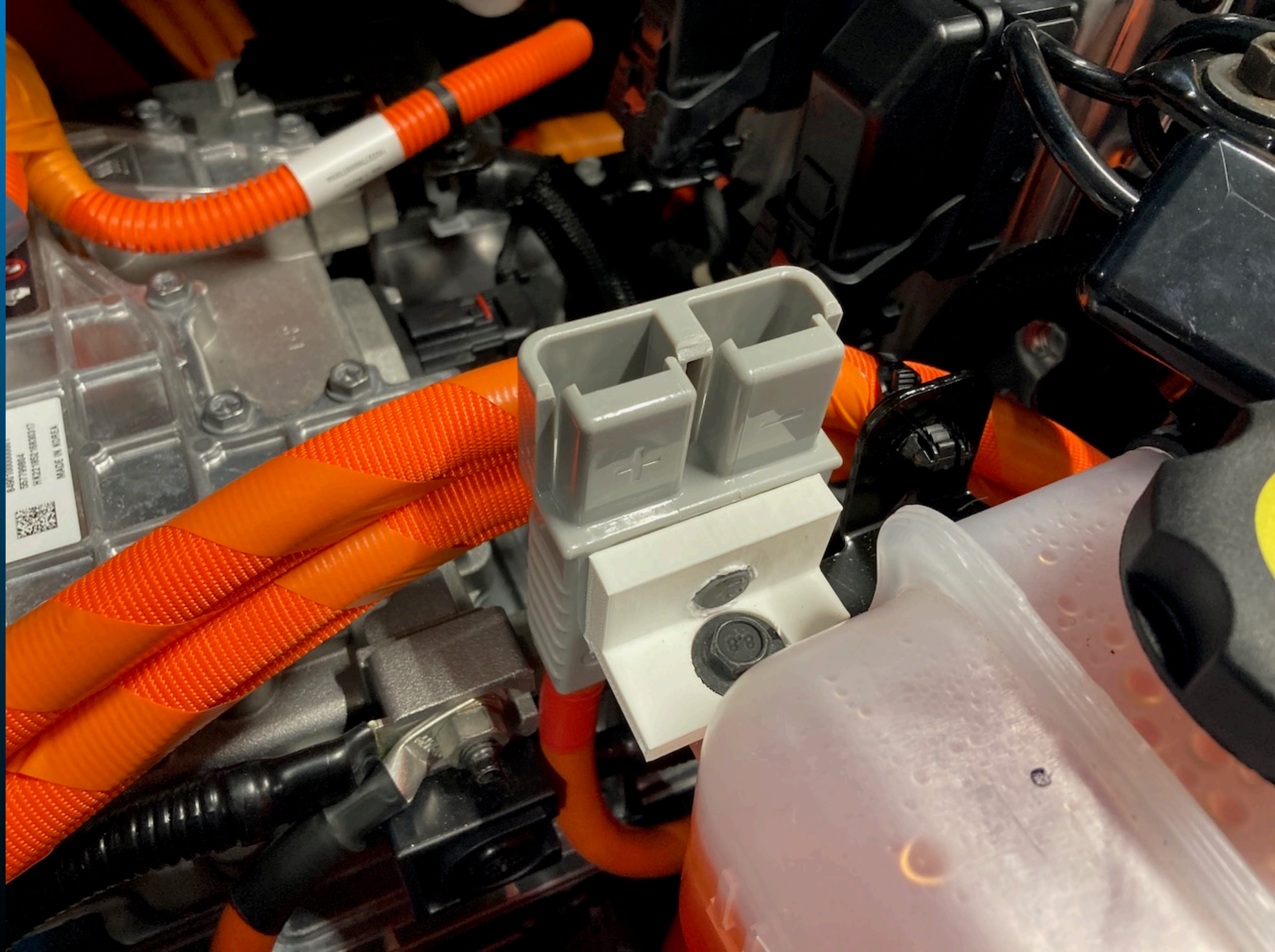


PN 08 29 0134
LEN 25-12-
112910

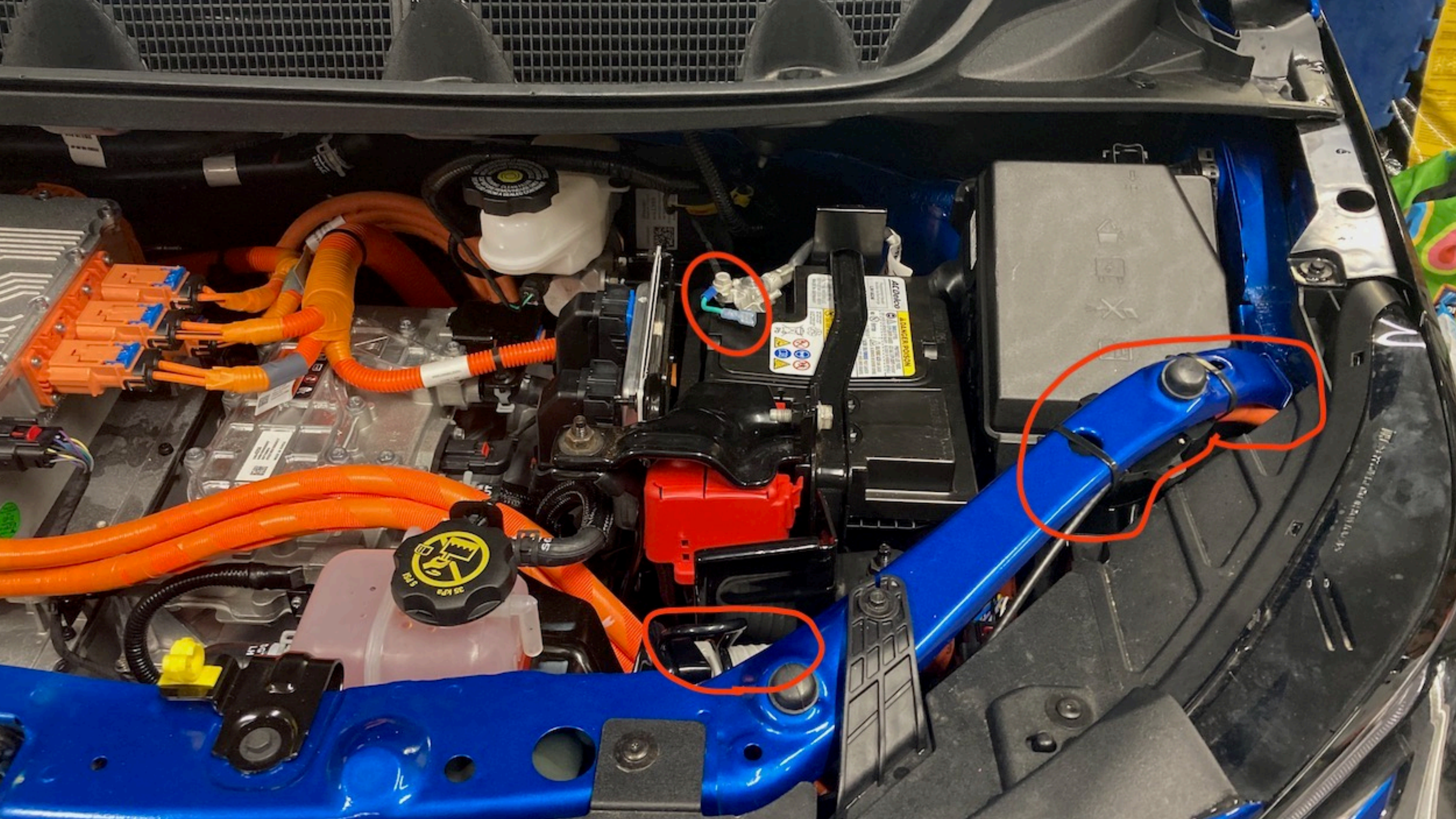


antrex™











Xantrex

PROWATT SW

2000 | MS ProWatt SW

WARNING - TO REDUCE THE RISK
DO NOT REMOVE THIS TAG!
OFF-PEAK
Do not remove this tag until you have read the instructions and are satisfied that you understand the correct use of the inverter. The inverter is designed for use as a power source for 12V DC loads only. It is not intended for use as a power source for 120V AC loads. The inverter is not to be used to power any appliance or equipment that is not specifically designed for use with the inverter. The inverter is not to be used to power any appliance or equipment that is not specifically designed for use with the inverter. The inverter is not to be used to power any appliance or equipment that is not specifically designed for use with the inverter.

400V

KA-KA

10-00-00

AVVERTENZE
A fine di ridurre il rischio di incendio
Per ogni altro avvertimento, leggere il manuale
e fare attenzione alle avvertenze.

12V 100Ah
100Ah 12V



**Connecting
to your Home**

Furnace Connection



Generator Input & Breaker Interlock



Manual Transfer Switch







Questions?

300MPG.org

Ben Nelson